

Envisioning the Future



KCC Treasure Hunt

Name one lei plant on campus?





KCC Treasure Hunt

Name one building or walkway on campus with an 'Olelo 'Oiwī Name?





KCC Treasure Hunt

On the following map, locate the campus hale?



Kaua'i Community College

3-1901 Kaunuaui'i Highway
 Lihu'e, HI 96766
 (808) 245-8225
 www.kauai.hawaii.edu



LEGEND:

- Bus Stop
- Restrooms
- Handicapped Parking
- Automatic External Defibrillator
- Emergency Phone

- ABRP - Autobody
- AMT - Automotive
- ART1 - Fine Arts 1
- ART2 - Fine Arts 2
- BUS - Business Education
- CARP - Carpentry
- CCTR - Campus Center
 ASUH-KCC
 Cafeteria
 Culinary Arts
 Fine Dining
- CDC - Child Development Center
- COG - Cognition
- DKI TECH - Daniel K. Inouye Tech Center
- EB - Elections Building
- EMT - Emergency Medical Services
 Training Center
- FARM - Office, Classrooms, K
- FC1 - Faculty 1
- FC2 - Faculty 2
- HAW ST - Hawaiian Studies
- HLT ANX - Health Sciences Annex
- HLTSCI - Health Sciences
- HLTKH - Health Sciences Kiloahana
- HTLHP - Health Sciences Ha'upu
- LRC - Learning Resource Center
 Classrooms
 Library
 Media Services
 Tutoring Services
- HEV - Hybrid Electronic Vehicle
- MN - Maintenance
- NSCI - Natural Science
- OCET - Office of Continuing
 Education and Training
 Apprenticeship
 Bookstore
 Classrooms
- OSC - One Stop Center
 Administration
 Financial Aid
 Student Services
 Testing Center
 University Center
- PACTR - Performing Arts Center
- PE - Physical Education
- SSCI - Social Science
- VET - Veteran Support Center
- WC - Wellness Center
- WELD - Welding Shop
- WELD2 - Welding Class



KAUMUALI'I HIGHWAY

PURH RD.

NAHE ST.

INUOU ST.

Click Map to Print

KCC Treasure Hunt

Locate anything in our mission statement that indicates KCC's connection to the 'aina:

Kaua'i Community College provides open access education and training in an ethical and innovative student-centered and community-focused environment, nurturing life-long learners who appreciate diversity and lead responsible and fulfilling lives.



KCC Treasure Hunt

On our [Campus website](#), identify any feature that indicates the 'aina on which KCC sits and in which we live, work, and play?



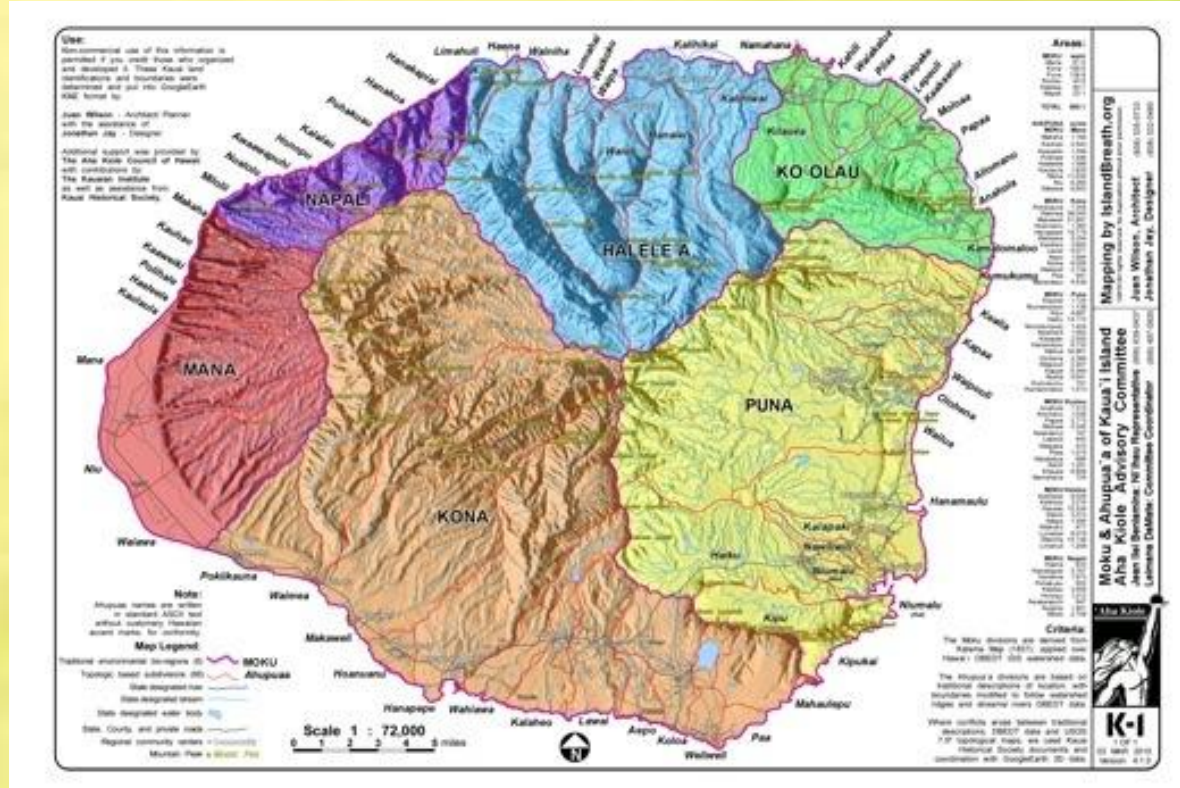
Culturally sensitive staff
Kupuna-keiki-haumana interactions
Culturally sensitive faculty
Outdoor classes and classrooms
Hawaiian named buildings
Place of Hawaiian Learning
Respect
Protocols Malama
Niumalu
Hawaiian Values
Hawaiian Culture
Place
Pono 'aina
Imagine
Mana Diversity
Kuleana
lei plants
'Ohana
Bearings marker signs
Place-marker signs
Hawaiian Moon calendar scheduling
Faculty cultural orientation
Student cultural orientations
Aha Moku-driven sustainability
traditional food plants
Community projects

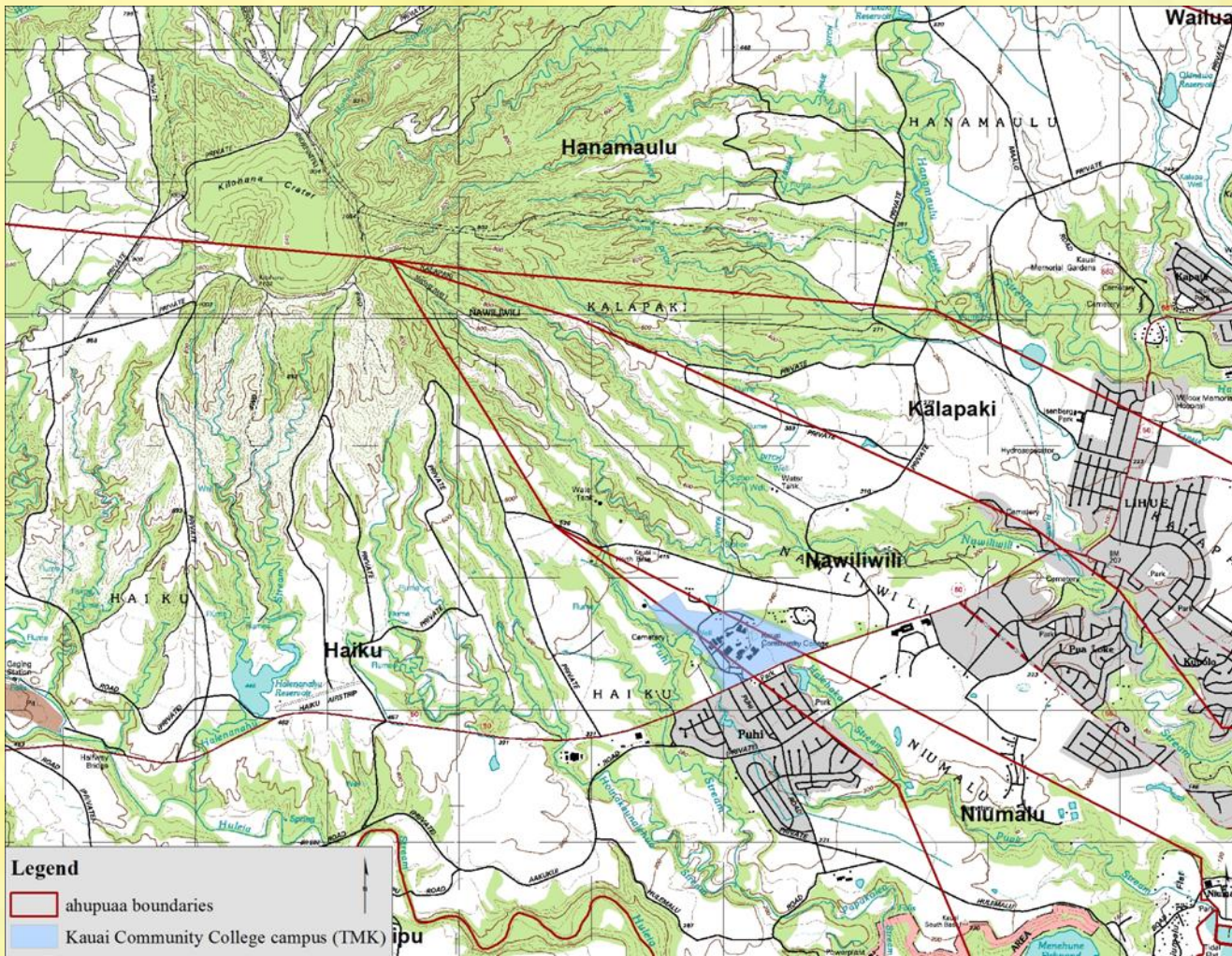
Beginning at the Beginning: Educating Ourselves

**He nani wale no o
Puna mai 'o a 'o.**

“There is only
beauty from one end
of Puna to the other.
There is nothing to
complain about.”

ON 838

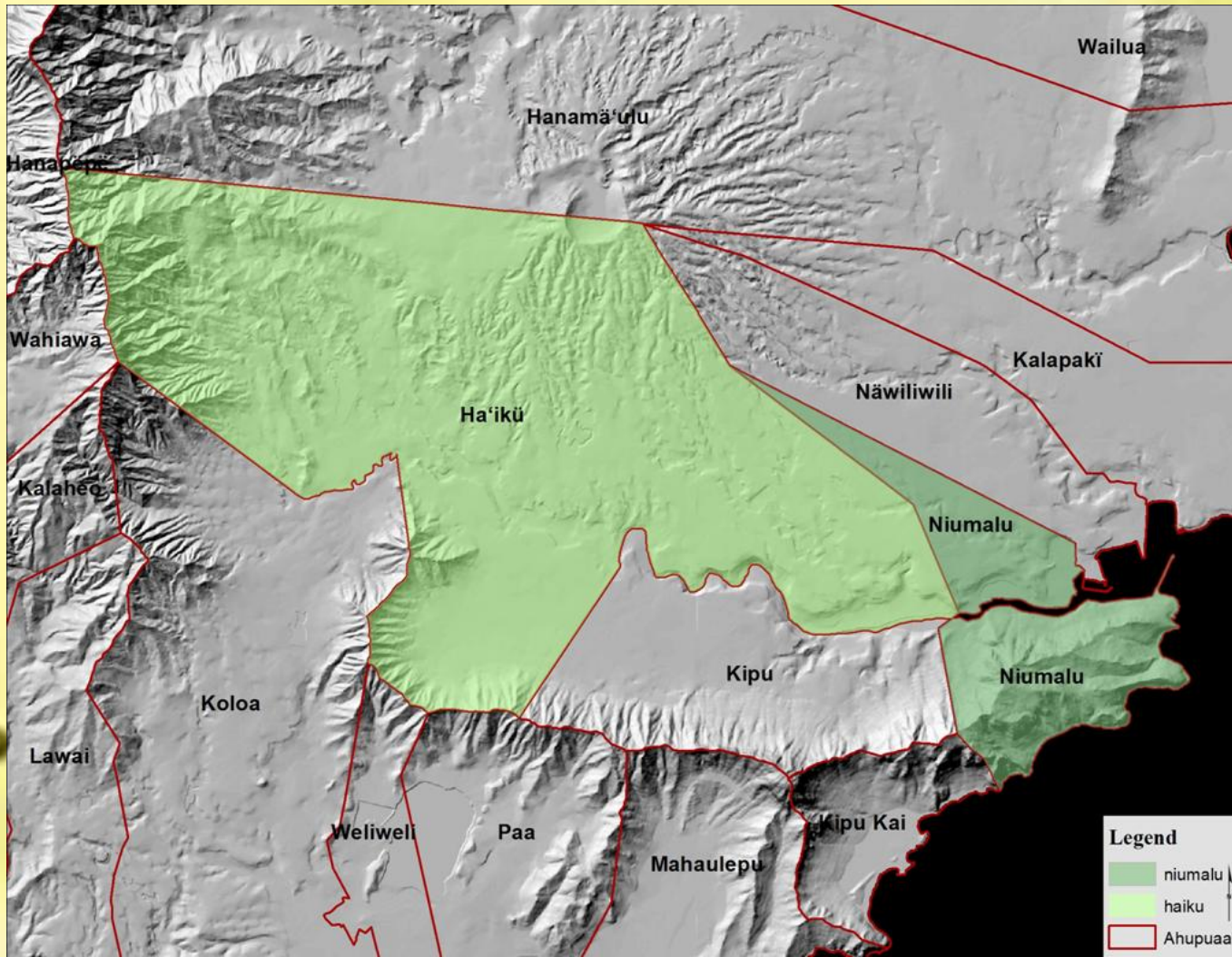




O Kilohana ia, he'awe'awe moku.

“That is the Kilohana of the broken bundle cords. Said of Kilohana above Lihu’e on Kaua’i. An old trail went by here, leading from Kona to Ko’olau. Robbers hid there and waylaid lone travelers or those in small companies and robbed them of their bundles.”

ON 2467





Journey to 'Alekoko
Fishpond





Old Stone Bridge



Upriver



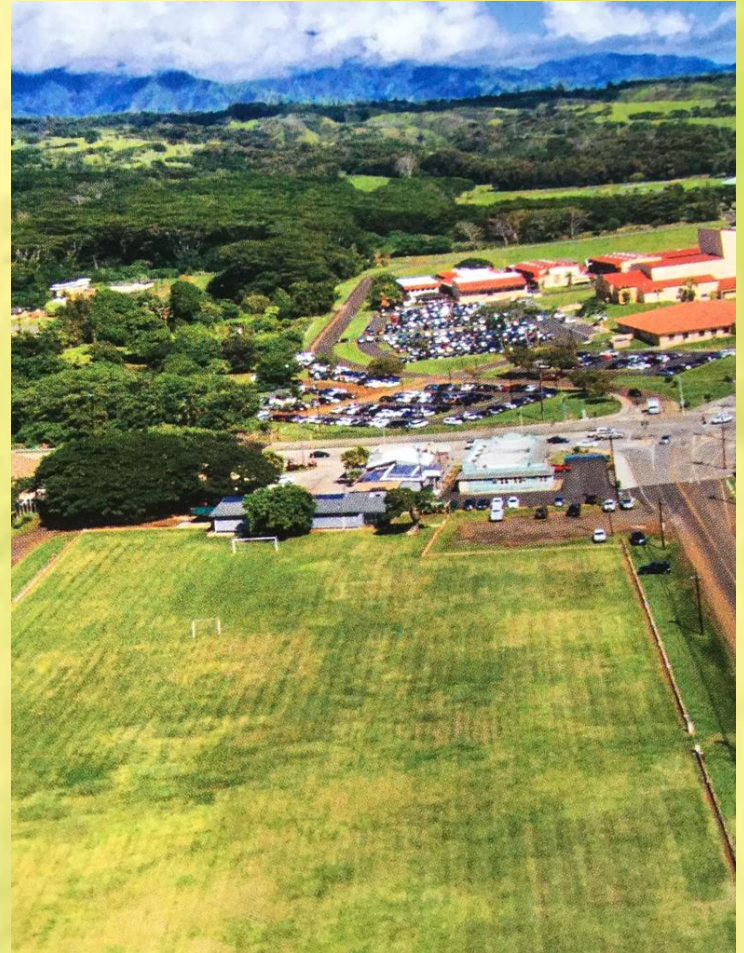
Learning about Puhi Camp

Built in the early
1920s

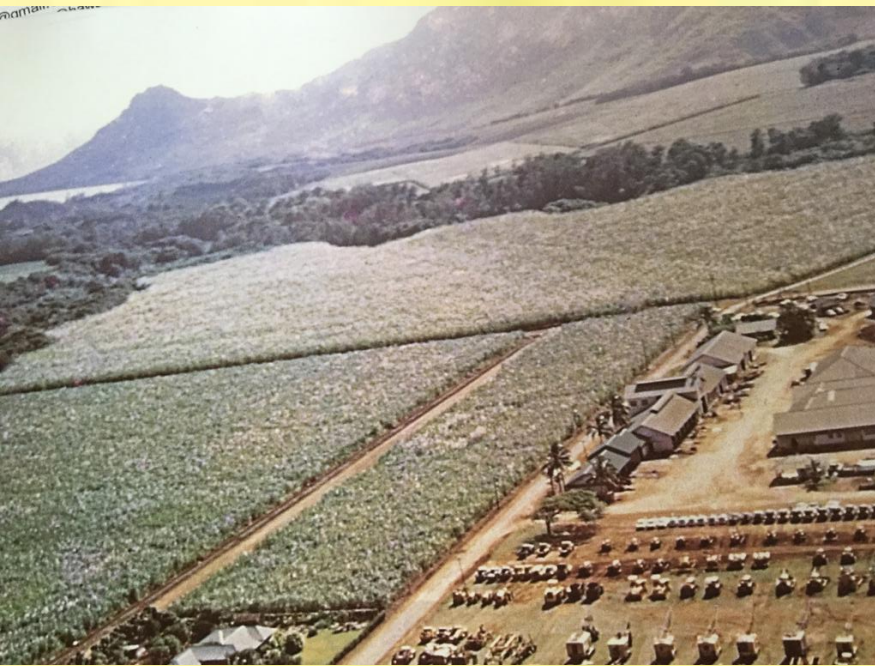
At one time the camp
held 600 homes,
more than 1,200
residents..

After 1968, residents
moved, many to Puhi
subdivision.

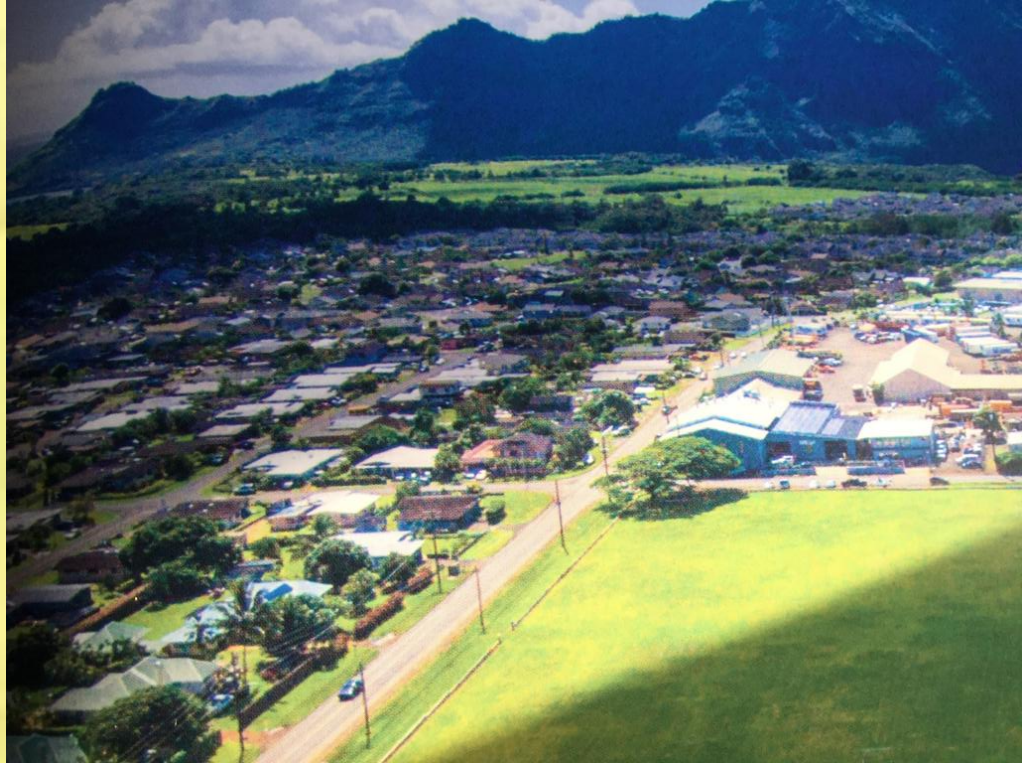




Puhi in the 1950s
and Today



Looking the Other Direction





Puhi Camp Cemetery
Filipino Section



Puhi Camp
Cemetery-
Japanese side

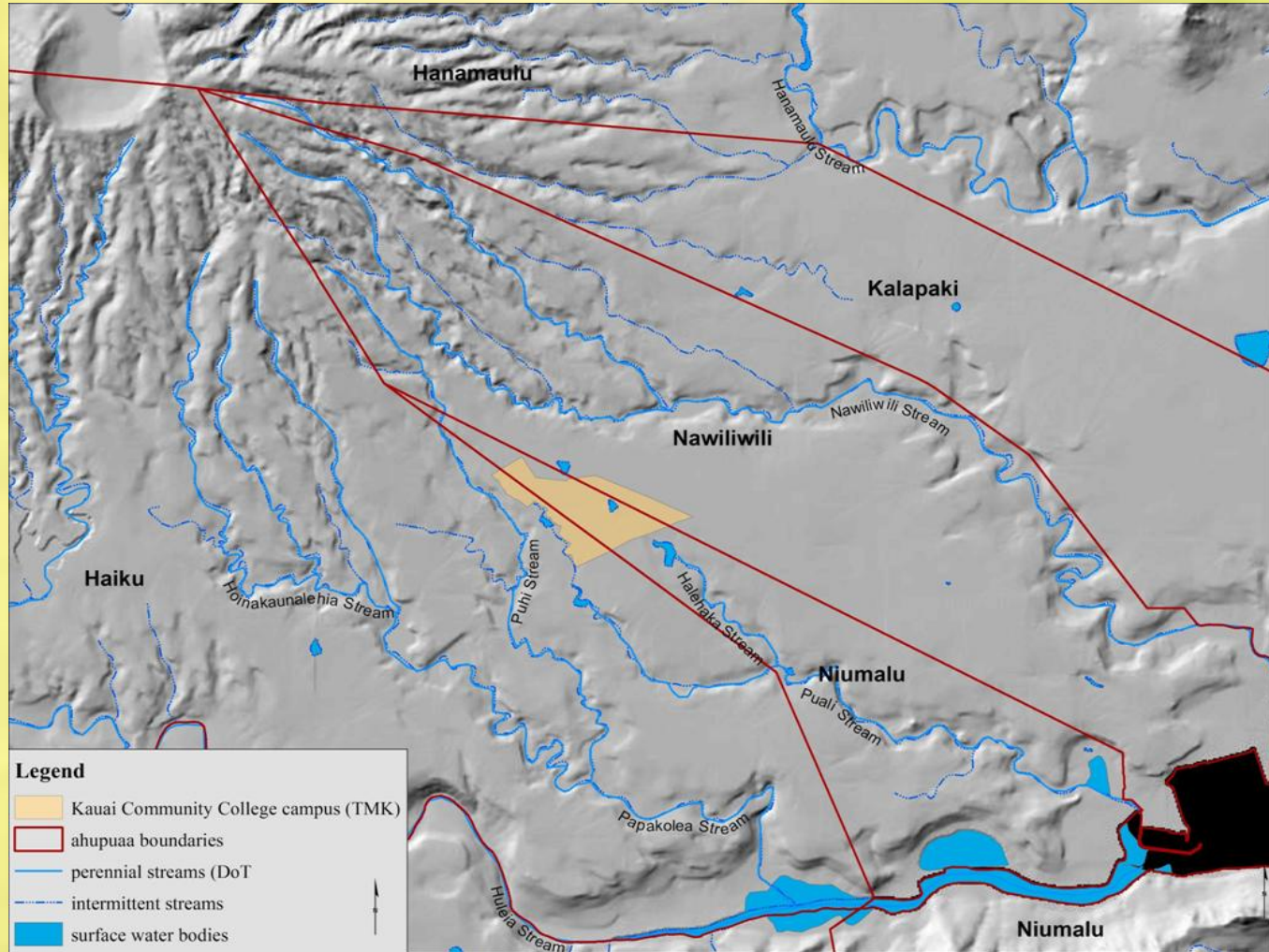
Wai

Streams: Puali, Halehaka, Ka Wahi, Waikohenui, Waikonui

Fishponds: Alekoko, Kaipolia

Bays: Nohiu

Au wai: Pauma



Tracing Waterways

Nawiliwili
Harbor ca.
1931





Puali Stream Feeding the
KCC Lo'i

Pu'ali Stream heading to ocean



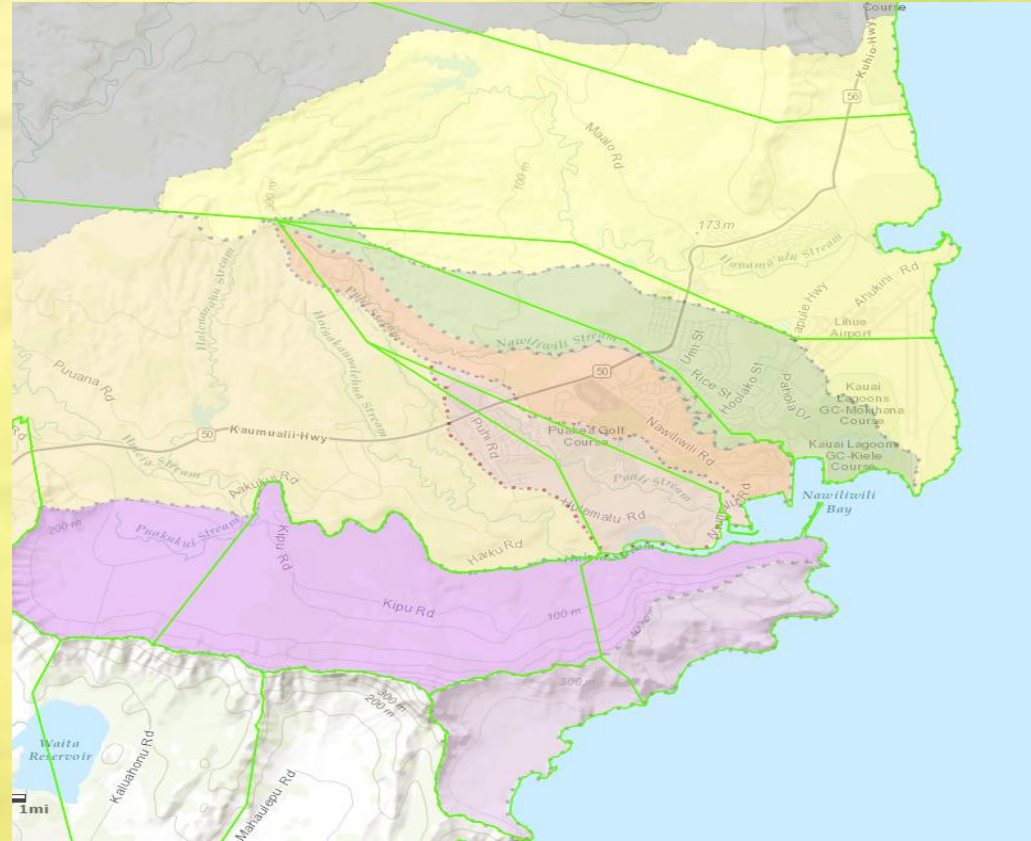
Pu'ali Stream Restoration



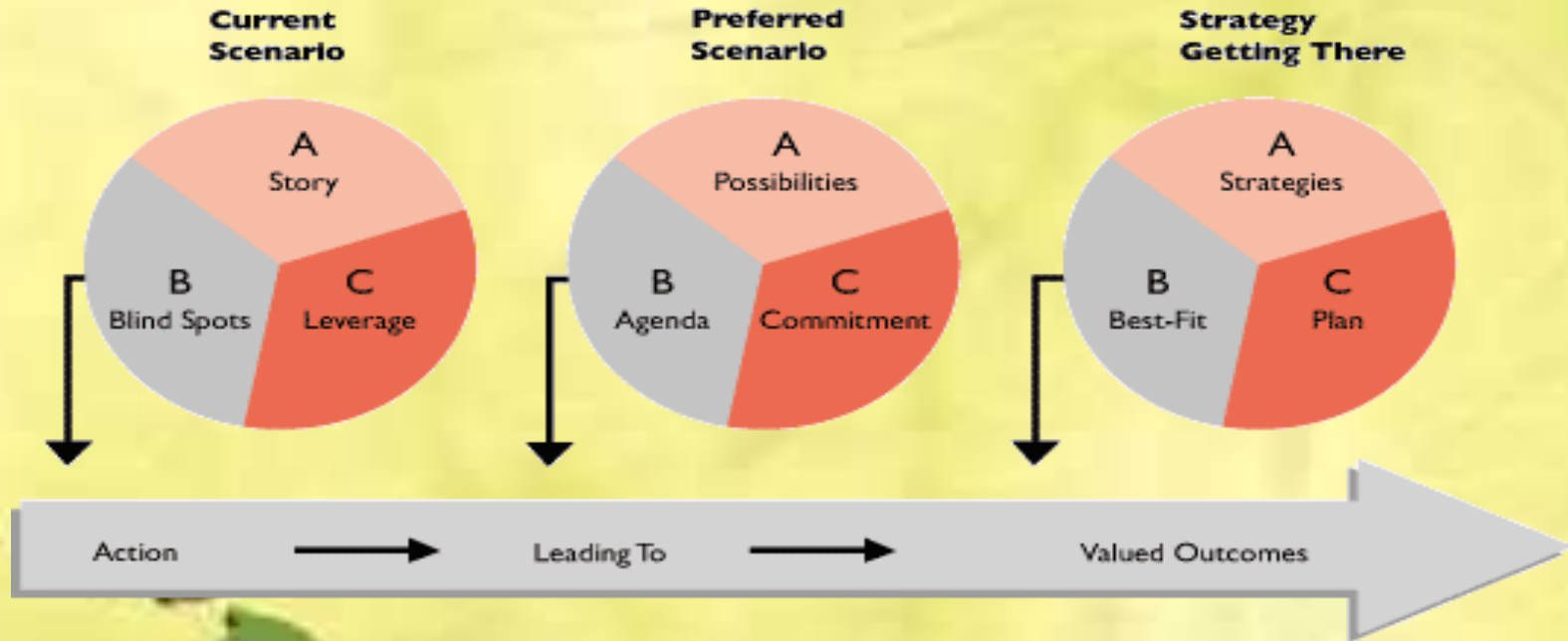




Obstacles for this class



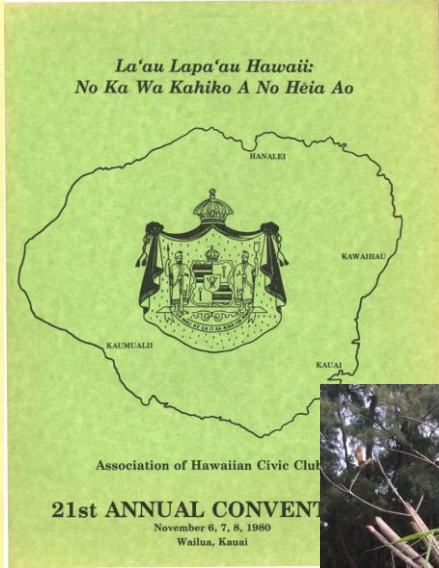
Achieving the Vision



Strategies: Mobilizing Resources - On Campus



Strategies: Mobilizing Resources - Off Campus



Strategies: Funding



HAWAII COMMUNITY FOUNDATION
Amplify the Power of Giving



NATIONAL ENDOWMENT FOR THE
Humanities



Short-Term Deliverables (1-2 yrs)

- ❖ Maps
- ❖ [Story Maps](#)
- ❖ Place markers
- ❖ [Web](#) site
- ❖ Tours
- ❖ Class learning assignments
- ❖ Standard DQs - culturally aware
- ❖ Aha Moku-based sustainability program
- ❖ Native Hawaiian Advisory Group
- ❖ 'Olelo 'Oiwi-named buildings
- ❖ Hale
- ❖ Orientations that engage the place
- ❖ Spring Imu
- ❖ 'Oiwi plants
- ❖ New Mission statement

Long-Term Outcome: To be a forest of Koa



Resources

Amimoto, Alton, Interview, November 28, 2016

Tenbruggencate, Jan W. *Grove Farm, Kaua'i: 150 Years of Stewardship and Innovation*, GroveFarm, Watermark Publishing, 2014.